

KANEPACKAGE GROUP OF COMPANIES

# KP Green Earth

A CORPORATE SOCIAL RESPONSIBILITY PROJECT NEWSLETTER



埼玉県  
SDGsパートナー



SDGs 未来都市  
埼玉県



# MANAGEMENT VISION

We deliver “Surprise”, “Good Impression”, and “Comfort” to as many countries/customers as possible in a speedy and timely manner through our package design and services.

We also aim to be an excellent company by strengthening the trust of stakeholders and corporate values.

## Table Of Contents

Message of the President / CEO

02

Company Profile

Principles of KP CSR and SDG

03

CSR Project Locations

04

Kanepackage Climate Change Action

- Blue Carbon Investment

05

Forest Carbon Project

- Feasibility Study on Mangrove CO2 Absorption

06

Mangrove Project

- Business-to-business Partnership for Mangrove Project
- Nurturing the Seeds of Change
- 35th Company Mangrove Planting and Tour

07

08

09

Community Outreach

- Mrs. Akie Abe - Japan Former First Lady
- Donation of New Health Center Building
- Medical Mission in Olango Island, Cebu
- Sanko and Koushin Companies Donates Medical Equipment
- Continuing Support for Day Care Centers
- Christmas Gift-giving to Day Care Centers

10

11

12

13

14

15

Donation Drive

- Kanepackage Partners with GMA Foundation
- Assistance to Employees Affected by Typhoon

16

17

CSR and SDG Goals

CSR Activities

- Kanepackage Philippine Inc.
- Pt. Kanepackage Indonesia
- Kanepackage Vietnam Co. Ltd.
- Super Flex Logistic Inc.

18

18

18

19

19

Messages

20

Recognition

21

Kanepackage Affiliates and Branches

22





# GREETINGS *from* **Mr. Yoshikazu Kanesaka**

PRESIDENT and CEO - KANEPACKAGE CO., LTD.

I want to express my heartfelt gratitude to our customers, affiliates, and project partners for their continued trust and support. Because of you, we were able to sustain the implementation of the various programs in our Corporate Social Responsibility (CSR) and Sustainable Development Goals (SDGs). The successes and significant impacts of our CSR and SDG programs resonates our business DNA of giving surprise, good impression and comfort' to all stakeholders.

We are all a shareholder in taking care of our only planet, our Mother Earth. As a corporate citizen, we will continue our commitment to invest in taking care of our Mother Earth and give back to the community. The return of this environmental investment may not be directly monetized, but the dividends can be passed on to the younger generation.

Our long-term goal is to be a carbon-neutral company by 2050. This goal seems daunting, but we will continue making innovations in our business model and shift the paradigm towards balancing business investment and environmental investment. Our initiatives in green infrastructure and blue carbon through our CSR and SDG programs already paved the way towards achieving this goal.

Our flagship environmental project – the KPGreen Earth almost reached another milestone of planting 15 million mangroves. This initiative has continued to attract more support and partners from the industry. It has created a ripple effect in attracting the interests of several other businesses to invest in environmental projects - a proof that sustainability and profitability can go hand in hand together.

This year, we donated a new two-story health center building furnished with some medical equipment and supplies in Olango Island, Cebu, Philippines. This is an additional feature of Kanepackage CSR and SDG project. In addition, a medical doctor visits the health center regularly to render free consultations. The health facility and the service of a medical doctor is expected to significantly enhance the community's health care services, particularly for those patients with limited access to health services.

Looking back since 2009, we are grateful for the overwhelming support of our partners in business, in government, and most specially the community. Guided by our shared values and strategic priorities for sustainability, we are excited to continue this journey with you.

Together, we are helping build a better future, one community at a time, by investing in green infrastructure and blue carbon. Thank you for being a part of this success.

# COMPANY Profile

<b>Company Name</b>	- Kanepackage Co., Ltd.								
<b>Establishment</b>	- September 29, 1976								
<b>Capital</b>	- 50,000,000 JPY								
<b>Number of Employees</b>	- 1,000 (including employees of affiliates)								
<b>Line of Business</b>	- <ul style="list-style-type: none"> <li>Design, testing, manufacturing and sale of various types of cushioning products</li> <li>Sale of corrugated boards and packages for office appliances such as Soft Pack (management of export kit products, packing and total distribution services)</li> </ul>								
<b>Officers</b>	- <table> <tr> <td>Chairman</td><td>- Sakutaro Kanehira</td></tr> <tr> <td>President</td><td>- Yoshikazu Kanekasa</td></tr> <tr> <td>Managing Director</td><td>- Kenji Takamura</td></tr> <tr> <td>Director</td><td>- Akira Katsuno</td></tr> </table>	Chairman	- Sakutaro Kanehira	President	- Yoshikazu Kanekasa	Managing Director	- Kenji Takamura	Director	- Akira Katsuno
Chairman	- Sakutaro Kanehira								
President	- Yoshikazu Kanekasa								
Managing Director	- Kenji Takamura								
Director	- Akira Katsuno								

## PRINCIPLES OF KP CSR & SDG

Corporate Social Responsibility (CSR) and the United Nations Sustainable Development Goals (SDGs) are increasingly recognized globally as a mechanism to cause positive change. By aligning CSR activities and business strategies with the SDGs, companies can contribute to a more sustainable future, enhance business reputation, and gain a competitive advantage in today's increasingly competitive marketplace.

Kanepackage Group's CSR programs encompass three main themes aligned with the roadmap of SDG:

- 1) Environmental Sustainability,
- 2) Social Impact, and
- 3) Economic Growth

With these CSR programs, Kanepackage is doing business outside the box and moves beyond traditional business practices to drive positive change to society and establish long-term value for all stakeholders.

Kanepackage commits to continuing to invest in green infrastructure and blue carbon projects and aims to be a carbon-neutral company by 2050.

### SUSTAINABLE DEVELOPMENT GOALS



1



Blue carbon mangrove project

2



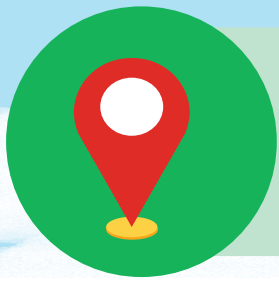
Education and Health Services

3



Employment, livelihood and partnerships





# CSR PROJECT LOCATIONS



## Banacon Island, Bohol



- PO partner: Banacon Fisherfolks and Mangrove Planters Association
- Year started: 2011
- Area planted: 250 ha



## Badian, Cebu



- PO partner: Dungguan Atub Fisherfolks Association and Bugas Farmer, Fisherfolks and Livelihood Association
- Year started: 2017
- Area planted: 6 ha



## Olango Island, Cebu



- PO partner: Olango Island Eco-tour Association
- Year started: 2009
- Area planted: 10 ha



## Tanjay City, Negros Oriental



- PO partner: Manipis Fisherfolks Association
- Year started: 2013
- Area planted: 1 ha



## Binalbagan, Negros Occidental



- PO partner: Nabuswang Ecopark Mangrove Plantation
- Year started: 2019
- Area planted: 2.5 ha





# KANEPACKAGE CLIMATE CHANGE ACTION

## BLUE CARBON INVESTMENT



Have you ever heard of the term blue carbon? Probably the answer is no, but perhaps you realize more than you know. Blue carbon is the term for carbon captured by the world's ocean and coastal ecosystems (mangroves, salt marshes, and seagrasses).

Human activities and business operations emit CO<sub>2</sub> and other greenhouse gases (GHGs). The increasing amount of GHGs in the atmosphere has changed

global climate. The initiatives to mitigate impacts of climate change is driving innovation among businesses to start investing on blue carbon sequestration specifically of mangroves.

Mangroves are vital ecosystems that provide numerous environmental, social, and economic benefits. Recent study showed that mangroves and coastal wetlands sequester carbon higher than tropical forests.



Recognizing the urgent need to help mitigate the impacts of climate change, Kanepackage has invested in the blue carbon mangrove project through its flagship program – the KPGreen Earth in partnership with the Department of Environment and Natural Resources since 2009. The pioneering mangrove blue carbon project were implemented in Cebu and Bohol through the active involvement of the local community.

We are all a shareholder in taking care of our Planet Earth. As a corporate citizen, Kanepackage commits to invest in taking care of our only planet and give back to the community. The return of this environmental investment may not be directly monetized, but the dividends can be passed on to the next generation.



# FOREST CARBON PROJECT

## FEASIBILITY STUDY ON MANGROVE CO2 ABSORPTION



Kanepackage through its KP Center for Mangrove Research partnered with ShinMaywa Industries, Ltd. and DeepForest Technologies to conduct a preliminary feasibility study of the carbon absorbed by mangrove plantations in Cebu and Bohol. This is part of the long-term goal of Kanepackage, which is to register for a carbon credit and be a carbon-neutral company by 2050.

ShinMaywa – a Japanese firm offering a wide variety of products and services collaborated with Kanepackage to expand the mangrove project and tapped the expertise of DeepForest Technologies in quantifying the mangrove carbon stock.

Deepforest has developed a breakthrough technology that uses AI from a drone to identify trees in forests and to utilize this technology in forestry, carbon absorption estimation, biodiversity conservation, and other environmental issues.

Initial fieldwork, interphase with community, and coordination with government institutions has been conducted. The feasibility study findings will be used to develop a detailed project proposal, including a plan for carbon monitoring, reporting and verification, and approach for community engagement.

Kanepackage's commitment to the carbon project highlights the growing importance of forest carbon projects as a nature-based solution to climate change. Nature-based solutions are an emerging approach, utilizing the importance of natural ecosystems in addressing the global environmental challenge





# MANGROVE PROJECT

## BUSINESS-TO-BUSINESS PARTNERSHIP FOR MANGROVE



Our mangrove project in the Philippines continued to attract more support from other businesses in Japan. On October 11 to 14, 2024, we organized the 33rd mangrove planting and tour with six participants in Banacon Island, Getafe, Bohol. With the help and support of the local community, we have planted 3,500 seedlings.

While walking around the mangrove plantation, the participants were elated to see the different heights of the mangroves planted since 2011. The scenic view has paid off their exhausting and long travel to the island.

Prior to the mangrove planting, the participants visited the Kanepackage Philippines in Calamba for a company tour. The mangrove planting and tour will not be complete without experiencing the unique features of Bohol. They were treated to some of the tourist attractions of Bohol including the Chocolate Hills and Tarsier Conservation Park.





# MANGROVE PROJECT

## NURTURING THE SEEDS OF CHANGE



Kanepackage Group strengthened its commitment to the flagship environmental initiative – the KPGreen Earth mangrove project through a ceremonial planting held on September 28, 2024, in Olango Island, Cebu.

The event was spearheaded by its President/CEO Mr. Yoshikazu Kanesaka and partnered with the Foundation for Encouragement of Social Contribution (FESCO) led by its Chairperson, Mrs. Akie Abe, and together with the volunteer students and teachers of Oita National College of Technology Japan. This is the 34th mangrove planting conducted and the volunteers planted 750 seedlings.

Over the years, many businesses and organizations have supported and partnered with this initiative. In 2018, FESCO – a Japan-based NGO gave recognition and awarded Kanepackage for the mangrove project implemented in the Philippines. This recognition fueled the Kanepackage aspiration and commitment to this environmental activity and invited FESCO to join this year's mangrove planting.

Since its launching in 2009, Kanepackage already planted over 14.8 million mangroves. This initiative proves that sustainability and profitability can go hand in hand together. It has nurtured the outlook of other company executives and shifted the paradigm towards balancing business investment and ecological investment. The spirit of giving back is becoming more practiced. This also serves as a model for how businesses can play a vital role in addressing environmental challenges and helping create a more sustainable future.





# MANGROVE PROJECT

## 35th COMPANY MANGROVE PLANTING AND TOUR



The company's mangrove planting and tour serves as a venue that connects employees from different branches. Although our mouth speaks different languages, our hearts beat the same – to participate in the noble undertaking of helping our Planet Earth. This initiative resonates with the company's value and commitment to helping mitigate the impacts of climate change.

On November 21 to 24, 2024, we successfully conducted the 35th mangrove planting and tour in Banacon Island, Getafe, Bohol. A total of 46 participants from

Kanepackage affiliates and business partners from MUFG Tokorozawa, Japan Care System, and KGS Corporation – Cebu Plant joined this event. With the active support and participation of Banacon Fisherfolks and the Mangrove Planters Association, we have planted 10,000 seedlings.

The four-day schedule started with a company visit and tour in Kanepackage Philippines in Lima where the participants coming from overseas were warmly welcomed by the host branch and concluded with a short tour and visit to some tourist attractions of Bohol. A plaque of appreciation was also presented to Mr. Masanori Yamada who personally donated funds to support the mangrove project.

The company mangrove planting and tour is regularly organized twice a year to give opportunities to the Kanepackage employees to experience mangrove planting and to learn its importance.





# COMMUNITY OUTREACH

## MRS. AKIE ABE

JAPAN'S FORMER FIRST LADY

Mrs. Abe graced our Olango Brgy. Health Clinic turn over ceremony last September 28th, 2024 in San Vicente Olango Island Cebu.

Mrs. Abe, is known for her composed and approachable demeanor, all can't help but admire her simplicity. Community programs are close to her heart as she is also a founder of an NGO Foundation for Social Contribution based in Japan that promotes community service movements and the development of society as a whole.

Mrs. Abe, in her speech said that she is happy to know that many Japanese companies are giving back to the local people, and believed that this will lead to a better relationship between the Philippines and Japan. She then recalled some initiatives undertaken by her late husband and former Prime Minister in strengthening the relationships between Japan and the Philippines to achieve peace.

Thank you Mrs. Abe.





# COMMUNITY OUTREACH

## DONATION OF NEW HEALTH CENTER BUILDING



Kanepackage Group of Companies turned over the newly constructed two-story health center building in Brgy. San Vicente, Olango Island, Lapulapu City, Cebu on September 28, 2024. The health center is furnished with necessary medical devices and supplies that can help improve the health services to the community. This is an additional feature of the company's Corporate Social Responsibility (CSR) and Sustainable Development Goals (SDGs).

The ceremony is led by its CEO/President Mr. Yoshikazu Kanesaka together with the other top management. Among the guests were Mrs. Akie Abe, the Chairperson of the Foundation for Encouragement of Social Contribution (FESCO), and the Office of Lapu-Lapu City, represented by Councilor Emilio Galaroza, who is also the Chairperson of the Committee on Health.



Mr. Kanesaka in his speech expressed his appreciation to the people of Olango Island and to the DENR Region 7 for the support and cooperation in the company's CSR program. He highlighted the significant impact of the first medical mission held in 2023 and committed to continue helping uplift the medical services in the island and hire a medical doctor who will visit the health center regularly. He also thanked FESCO for recognizing the CSR programs of Kanepackage in Olango Island specifically the mangrove project.



The Kanepackage management is thankful to the people of Olango Island who have been actively supporting its CSR and SDG programs. This donation will significantly enhance the barangay's health care services, particularly for patients with limited access to health services.



# COMMUNITY OUTREACH

## MEDICAL MISSION IN OLANGO ISLAND, CEBU

We conducted a successful medical mission in Barangay San Vicente, Olango Island, Lapu-Lapu City, Cebu on September 28 to 29, 2024. Eleven volunteer medical doctors offered their time and dedicated their expertise to bring much-needed healthcare services to the coastal community. A total of 398 patients received a wide range of essential medical services including medical consultation, minor surgery, health education, and free medicines.



This medical mission exemplifies Kanepackage's commitment to CSR and SDG programs and its dedication to improving the health and well-being of our partner island communities. This is the second time we have conducted this medical mission for this community. The smiles and expressions of relief on the faces of the patients we served fueled our commitment to continue this community service.



This year's medical mission is simultaneously held during the inauguration and turnover ceremony of the new San Vicente Health Center building donation. Part of the commitment of Kanepackage management to continually render health services to the community is to hire a medical doctor who will visit the health center regularly.

The officials of Barangay San Vicente were very grateful to the management of Kanepackage for bringing these services to their place.



# COMMUNITY OUTREACH

## SANKO AND KOUSHIN COMPANIES DONATES MEDICAL EQUIPMENT

Our affiliated companies, Sanko Manufacturing Co., Ltd. and Koushin Industries, Inc. donated portable medical equipment to San Vicente Health Center in Olango Island, Cebu. The donation was received by their Barangay Captain, Mrs. Edilberta Eyas-Lambojon during the inauguration ceremony of the new health center building on September 28, 2024.



Sanko and Koushin are leading companies in Japan involved in the manufacturing, distribution, and repair of medical equipment. Their donation include compact suction units and a rescue set for adults and children. This crucial equipment will significantly enhance the health center's ability to provide timely and effective healthcare, particularly in remote island communities such as Olango Island.



Their Barangay Captain was very thankful for this medical equipment donation. This partnership between businesses and the health center through the CSR and SDG initiatives will have a lasting legacy in improving community health.



# COMMUNITY OUTREACH

## CONTINUING SUPPORT FOR DAY CARE CENTERS

One of the Kanepackage Group of Companies' education initiatives is the donation of books and school supplies to its daycare center beneficiaries. Books that are recommended by the Department of Social Welfare and Development (DSWD) were also included in the donation.

School supplies such as writing pads, pencils, erasers, sharpeners, and crayons were given to children enrolled in San Vicente Daycare Center in Olango Island, Lapu-lapu City, Cebu and Manipis Daycare Center, in Tanjay City, Negros Oriental.

In addition, the Manipis Daycare Center was renovated with the help of the Kanepackage Group of Companies. The daycare center building was slightly deteriorated and needed some renovation for safety and more conducive to learning. The continued support of Kanepackage helped the center maintained the safety standards.

Both day care centers achieved the highest star ranking based on the level of compliance with the DSWD's standards and indicators.





# COMMUNITY OUTREACH

## CHRISTMAS GIFT-GIVING TO DAY CARE CENTERS



The Christmas season is the time of the year wherein once again we spread love and bring smiles to the faces of the daycare children with a gift-giving. In a heartwarming act of generosity led by our President / CEO Mr. Yoshikazu Kanesaka, we gave gift bags filled with toys, personal hygiene kits, and Jollibee food packs to over 170 daycare children.

In his short speech, Mr. Kanesaka conveyed a more meaningful approach to gift-giving, one that celebrates thoughtfulness and the true spirit of the holiday. He reminded us that what matters the most is showing care and connection to one another.



The chosen beneficiaries were the daycare centers of San Vicente (Olango Island, Cebu), Manipis (Tanjay City, Negros Oriental), and Banacon (Getafe, Bohol). These beneficiaries were our partner community for our mangrove conservation project. This gift-giving is our way of giving back to these community that



The holidays can be a challenging time for some families, and this small gesture has brought a little extra joy to these children. We look forward to continuing this spirit of giving back in the years to come.



# DONATION DRIVE

## KANEPACKAGE PARTNERS WITH GMA FOUNDATION

The Philippines has experienced a series of tropical cyclone from October to November 2024. The Kanepackage Philippine Inc. took the initiative to extend relief efforts in partnership with the GMA Kapuso Foundation -a socio-civic organization of a television network in the country. Included in the donation were cash and some essential supplies, such as medicines, rice, canned goods, noodles, coffee, milk, soaps, shampoos, toothbrushes and sanitizers.

Kanepackage Philippine, Inc. Vice President, Ms. Evangeline Ortillo handed over the donations to Ms. Rikki Escudero-Catibog, the Executive Vice President and Chief Operating Officer of the GMA Kapuso Foundation last December 3, 2024.

The donation reflects Kanepackage's commitment to CSR and SDG programs and its dedication to make a positive impact on the community.





# DONATION DRIVE

## ASSISTANCE TO EMPLOYEES AFFECTED BY TYPHOON



The Management showed support not only in good times but most especially during the tough times. A total of 46 employees received relief cash assistance, 33 from Kanepackage Philippine, Inc. and 13 from Super Flex Logistic, Inc. who were affected by Typhoon Kristine. The distribution of cash aid was spearhead by Mr. Yuji Kanehira, President of Kanepackage Philippine Inc.



In times of crisis, the management of the Kanepackage has been responding by giving financial aid to those afflicted by natural calamities. This act of kindness proves the company's commitment to valuing the employees as its greatest asset.





# CSR & SDG GOALS



## CONTINUING & SHORT-TERM GOALS

- REGULAR COMPANY AND COMMUNITY MANGROVE PLANTING
- MEDICAL MISSION
- SCHOLARSHIP PROGRAM FOR COMMUNITY BENEFICIARIES



## LONG - TERM GOALS

- EXPANSION OF FOREST CARBON PROJECT
- CERTIFICATION OF FOREST CARBON CREDIT
- "CARBON-NEUTRAL COMPANY BY 2050"

## CSR ACTIVITIES

### KANEPACKAGE PHILIPPINE INC.



"Kanepackage Philippine, Inc. proudly supports the Philippine Red Cross in its life-saving mission through our annual Blood Letting Activity every February. This initiative is part of our unwavering commitment to sustainability and the well-being of Filipinos. Together, we can make a difference, one donation at a time."

### PT. KANEPACKAGE INDONESIA



Donation for the education of orphans and underprivileged children.





# CSR ACTIVITIES

## KANEPACKAGE VIETNAM CO. LTD.

**2023 to 2024**

VN National Children's Hospital in HN

**2011**

Social Protection Center in Ba vi

**2012 to 2016**

Social Protection Center in Dong Anh

**2017**

CSR 1 village in Hoa binh

**2018**

CSR 1 village in Yen Bai

**2019**

CSR in Pogoda in HN

**2020**

CSR in Quang Ninh

**2022**

CSR in school in Quang ninh



## SUPER FLEX LOGISTIC INC.



MANGROVE PLANTING  
SARIAYA, QUEZON  
July 27, 2024

BRIGADA ESKWELA  
LOMA ELEMENTARY SCHOOL  
JULY 26, 2024





# MESSAGES

## Mr. Akira Katsuno

Director

Our company will celebrate 50th anniversary in 2026. This milestone has been made possible thanks to the support of our valued stakeholders, for which we express our deepest gratitude.

The Kanepackage Group will continue to promote environmental conservation initiatives and strive for further evolution as we move toward the next 50 years. Additionally, as a group, we remain committed to achieving Carbon neutrality by 2050.

Beyond these initiatives, we will continue to balance corporate growth with social contribution. We appreciate your continued support.



## Dr. Abner P. Barnuevo

Senior Manager KPGroup Philippines Inc.



Dr. Abner Barnuevo, the in-charge of the KPGreen Earth Project was appointed as member of the Management Board of Olango Island Wildlife Sanctuary by DENR Secretary Ms. Maria Antonia Yulo Loyzaga. The appointment was awarded last September 27, 2024 and was handover to him February of this year.

Management Board basic role includes overseeing the implementation of laws and policies of the protected area, approval of any activities or development within the protected area. He was also appointed as chair of committee on biodiversity and conservation.

Regular Members of the board are Regional Directors including DENR, governor, congressman, mayor and barangay captain. Appointed members from NGO, university, representative of community and private sector.

Congratulations Dr. Abner.





# RECOGNITION



## PLAQUE OF APPRECIATION

The Plaque of Appreciation was given to the Kanepackage Group of Companies for their continuous efforts in providing maintenance of Olango Island's mangrove ecosystem.



## PLAQUE OF APPRECIATION

The Plaque of Appreciation was awarded to the Kanepackage Group of Companies for their initiatives to foster and support children by granting full scholarships.



## PLAQUE OF RECOGNITION

The Kanepackage Group of Companies received the Plaque of Recognition for their efforts that will enhance the health of the community in Barangay San Vicente.



# KANEPACKAGE AFFILIATES *and* BRANCHES



## JAPAN

**Kanepackage Co. Ltd.**

Saitama (Head Office)

Touhoku Branch

Shirakawa Branch

Osaka Branch

Kanagawa Branch

Ome, Tokyo Branch

**Established: September 29, 1976**



## PHILIPPINES

**Kanepackage Philippine Inc.**

Laguna Plant (Calamba, Laguna)

LIMA Plant (Lipa Malvar, Batangas)

FPIP Factory (Sto. Tomas, Batangas)

Cebu Warehouse (Lapulapu City, Cebu)

Cavite Warehouse (Rosario, Cavite)

**Established: August 8, 1996**



## THAILAND

**Kanepackage (Thailand) Co. Ltd.**

Ayutthaya, Thailand

**Established: February 26, 2006**



**Super Flex Logistic Inc.**

Binan, Laguna

**Established: May 14, 2004**



## CHINA

**Kanepackage Hongkong Co., Ltd.**

Kanepackage (Suzhou) Co., Ltd.

**Established: 2005**



**KPGroup Philippines, Inc.**

Alabang, Muntinlupa

**Established: July, 2011**



## VIETNAM

**Kanepackage Vietnam Co. Ltd.**

Hanoi Branch (Dong Anh District, Hanoi)

Amata Branch (Bien Hoa Town, Ho Chi Minh)

**Established: May 31, 2005**



## INDONESIA

**Pt. Kanepackage Indonesia**

Lippo Cikarang, Bekasi

**Established: January 3, 2012**





KPGroup Philippines, Inc.  
Alabang, Muntinlupa  
23F Tower 1, Insular Life Corp. Center,  
Filinvest, Alabang, Muntinlupa City  
Tel. No.: 02 8555 1098

Lapu-lapu City, Cebu  
510 iMEZ Bldg., The Outlets at Pueblo Verde,  
MEZ2, Basak, Lapu-lapu City, Cebu  
Tel. No: 032 8268 5903

